

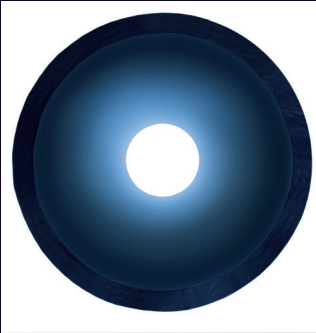
Stronger than iron

Incredibly / Improved / impact / resistant

iPVCTM Pipe DH DRAIN PIPE



OVERVIEW

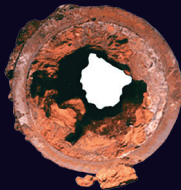


For the first time in the world, PYUNGWHA PIPE INDUSTRY developed iPVC DH DRAIN PIPE, which is five times stronger than cast iron and suitable for long lifespan housing.

iPVC DH DRAIN PIPE

DH DRAIN PIPE

iPVC DH DRAIN PIPE is used as in-house pipes, stack pipes and collect pipe in the basement floor. It is high strength pipe system optimal for large buildings such as skyscrapers, apartment buildings, hotels and long lifespan houses.



Cast-iron pipe

COMPARISON CHART

iPVC DH DRAIN PIPE is a world-class, high-strength drain pipe system. Its performance far exceeds international standards.

Item	iPVC DH DRAIN PIPE	ISO	ASTM
Tensile strength (MPa)	53	45	48.3
Drop weight Impact strength (weight)	3.0m/9.84' 9kg/19.84(lb)	1.6m/4.92' 1kg/2.20(lb)	-

IMPACT RESISTANCE TEST (30 TON EXCAVATOR)



REFERENCES

- LOTTE WORLD TOWER in Korea. (123 Stories, 555m)



Site 123F LOTTEWORLD TOWER
Ordering organization LOTTE CORPORATION
Builder LOTTE E&C
Product Name 2040
Construction Period 2013, 08
PPI PYUNGWHA



- HILTON HOTEL in Kuala Lumpur, Malaysia. (38 Stories, 154m)



- Others



- Installed at 730 work sites including the National Cancer Center of Japan

- Used for 80% of collect pipe in the basement of Apartments in Korea

CERTIFICATIONS & APPROVALS



USA



NSF International



American Society for Testing and Materials



JAP

JIS
(Japan National Standard)



KOR

- Certificate of New Excellent Product (Ministry of Trade, Industry Energy)
- Certificate of designation of Excellent Product (Public Procurement Service)
- ISO 9001

- Uniform Plumbing Code

PRODUCTION STANDARDS

- ASTM D 2665 (1 ¼", 1 ½", 2", 3", 4")
- KS M 3404 35mm ~ 300mm

* unit : inch / mm

PIPE	1 ¼"	1 ½"	2"	3"	4"	5"	6"	8"	10"	12"							
	35	40	50	75	100	125	150	200	250	300							
11.25° ELBOW (11.25L)	4"	6"															
	100	150															
TOILET BOWL ELBOW (LS-N)	4"																
	100																
TOILET BOWL ELBOW (LR)	4"																
	100																
22.5° ELBOW (22.5L)	4"	6"															
	100	150															
U-TRAP (UT)	3"	4"	5"														
	75	100	125														
90° ELBOW (DL)	1 ¼"	1 ½"	2"	3"	4"	5"	6"	8"	10"	12"							
	35	40	50	75	100	125	150	200	250	300							
SOCKET (DS)	1 ¼"	2"	3"	4"	5"	6"	8"	10"	12"								
	35	50	75	100	125	150	200	250	300								
SEXTIA BEND (LONG BEND/SHORT BEND)	3"X3"	3"X4"	4"X4"	4"X5"	4"X6"	/	3"X4"	4"X4"	4"X5"								
	75X75	75X100	100X100	100X125	100X150	/	75X100	100X100	100X125								
LONG ELBOW (LL)	2"	3"	4"	5"	6"	8"											
	50	75	100	125	150	200											
SUPER P-TRAP (SPT)	1 ½"	2"	3"														
	40	50	75														
P TRAP (PT)	1 ½"	2"															
	40	50															
45° ELBOW (45L)	1 ¼"	1 ½"	2"	3"	4"	5"	6"	8"	10"	12"							
	35	40	50	75	100	125	150	200	250	300							
REDUCER (IN)	2"X1 ¼"	2"X1 ½"	3"X2"	4"X2"	4"X3"	5"X4"	6"X4"	6"X5"	8"X6"	10"X8"	12"X4"	12"X5"	12"X6"	12"X8"	12"X10"		
	50X35	50X40	75X50	100X50	100X75	125X100	150X100	150X125	200X150	250X200	300X100	300X125	300X150	300X200	300X250		
LT FITTING (LT/CLT)	2"	3"	4"	5"	6"	8"	10"	12"	2"X1 ¼"	2"X1 ½"	3"X1 ¼"	3"X1 ½"	3"X2"	4"X2"	4"X3"	5"X2"	5"X3"
	50	75	100	125	150	200	250	300	50X35	50X40	75X35	75X40	75X50	100X50	100X75	125X50	125X75
Y FITTING (Y/CY)	5"X4"	6"X2"	6"X3"	6"X4"	6"X5"	8"X4"	8"X5"	8"X6"	10"X4"	10"X5"	10"X6"	10"X8"	12"X4"	12"X5"	12"X6"	12"X8"	12"X10"
	125X100	150X50	150X75	150X100	150X125	200X100	200X125	200X150	250X100	250X125	250X150	250X200	300X100	300X125	300X150	300X200	300X250



Head Office and Hwaseong Plant

PYUNGWHA PIPE INDUSTRY

HEAD QUARTER : 1085-11 Beodlero, Jangan-myeon, Hwaseong-city, Gyeonggi-do, KOREA.
Tel : +82-31-428-6940 Mob : +82-10-2872-2040 Home page : www.ppinet.co.kr
E-mail : limjh@ppinet.co.kr