

These statements have not been evaluated by the Food and Drug Administration. This product is not intended to diagnose, treat, cure or prevent any disease. This device does not cure cancer. It does not prescribe any diagnosis or treatment and only claims the statements in the medical device listing of the FDA's regulations. Specific medical advice should be obtained from a licensed health care practitioner. Any information and personal testimonies about this device does not reflect any medical claim.

MANAGING YOUR HEALTH CARE

HEALING WITH AMETHYST

Amethyst is universally accepted as a crystal with healing properties which has been around since ancient times. There are many ways in which amethyst can be incorporated into healing practices. Amethyst is identified as a crystal recognized for its ability in clearing certain types of blockages, most notably in Chakra alignment. By transforming energies on all levels, amethyst also has the ability to balance and stabilize energies located within certain areas.

Amethyst has been associated with the healing and aligning of ailments. The benefit of using a crystal lies in the healer being able to detach him or herself from the healing process. The healer assigns the healing channel to the crystal, which frees the healer from involvement in the process. The healing process then becomes: universal energy to the amethyst to the recipient.



Notice that the healer and the ego are not part of the process. The healer is able to carry on with a healing session acting as the channel only. The ego has less opportunity to take the credit for itself because the healing channel has been assigned to the amethyst by the healer. Amethyst has come to be known as a power crystal with prolific healing powers that can be characterized as purifying, pacifying and transitional. Amethyst has the ability to

transform lower energies into higher ones and acts as a healer at all levels of mind, body and spirit. The healing powers of amethyst date back as far as the ancient Greeks who believed that amethyst protected a person from the intoxicating effects of alcohol. The word amethyst is of Greek origin, and is translated as amethystus- meaning intoxicated (methysm nos from methein or intoxicated, methy= wine).

R I C H W A Y

Richway International Incorporation USA. Fuji Bio Sceinece Incorporation. Richway & NF Manufacture
Richway International Japan Branche Co. The Life Corporation Korea. Richway EU Corporation.



THIS BROCHURE HAS BEEN COMPILED BY PRESENTING MATERIAL (TAKEN OUT OF CONTEXT) FROM THE RESEARCH STUDY OF THE RECORDS OF DOCTORS: DR. TAKADA MAKU, DR. HARASHITA TOSHIUKI, DR. HIROUCHI MITCHIO AND DR. OTA NOBUDI OF TOHO UNIVERSITY HOSPITAL(Funabashi City CHIBA 214), JAPAN. THESE RESEARCH RECORDS WERE DEVELOPED OVER A 40 YEAR PERIOD OF TIME. (for more information; www.sci.toho-u.ac.jp) BIBLIOGRAPHY, DR. SANG WHANG- "REVERSE AGING", MD., TED ROZEMA - "CHELATION THERAPY", AND DR. FRED SOYKA WITH ALAN EDMONDS- "THE ION EFFECT"

THE
RICHWAY
GROUP

A STATE OF THE ART

PROFESSIONAL AMETHYST BIOMAT 7000_{MX}

THE BIOMAT IS A MODERN CREATION AND PROVEN EFFECTIVE CRAFTED BY HIGHLY SKILLED SCIENTISTS AND ENGINEERS

A BREAKTHROUGH
IN MEDICAL SCIENCE



R I C H W A Y

Professional Amethyst Biomat
US FDA Medical Device 510K: K072534

RICHWAY INTERNATIONAL INC. & FUJI BIO SCIENCE INC.

1314 South King Street Suite 520 Honolulu HI 96814 USA. Tel: 808-589-2800 Fax: 808-597-1651
www.richwayusa.com www.richwaykorea.com www.richwayeu.com www.richwaynihon.co.jp

These statements have not been evaluated by the Food and Drug Administration. This product is not intended to diagnose, treat, cure or prevent any disease. This device does not cure cancer. It does not prescribe any diagnosis or treatment and only claims the statements in the medical device listing of the FDA's regulations. Specific medical advice should be obtained from a licensed health care practitioner. Any information and personal testimonies about this device does not reflect any medical claim.

MANAGING YOUR HEALTH CARE

HEALING WITH AMETHYST

Amethyst is universally accepted as a crystal with healing properties which has been around since ancient times. There are many ways in which amethyst can be incorporated into healing practices. Amethyst is identified as a crystal recognized for its ability in clearing certain types of blockages, most notably in Chakra alignment. By transforming energies on all levels, amethyst also has the ability to balance and stabilize energies located within certain areas.

Amethyst has been associated with the healing and aligning of ailments. The benefit of using a crystal lies in the healer being able to detach him or herself from the healing process. The healer assigns the healing channel to the crystal, which frees the healer from involvement in the process. The healing process then becomes: universal energy to the amethyst to the recipient. Notice that the healer and the ego



are not part of the process. The healer is able to carry on with a healing session acting as the channel only. The ego has less opportunity to take the credit for itself because the healing channel has been assigned to the amethyst by the healer.

Amethyst has come to be known as a power crystal with prolific healing powers that can be characterized as purifying, pacifying and transitional. Amethyst has the ability to transform

lower energies into higher ones and acts as a healer at all levels of mind, body and spirit. The healing powers of amethyst date back as far as the ancient Greeks who believed that amethyst protected a person from the intoxicating effects of alcohol. The word amethyst is of Greek origin, and is translated as amethystus- meaning intoxicated (methysm nos from methein or intoxicated, methy= wine).



RICHWAY

Richway International Incorporation USA. Fuji Bio Sceinece Incorporation. Richway & NF Manufacture
Richway International Japan Branche Co. The Life Corporation Korea. Richway EU Corporation.

THIS BROCHURE HAS BEEN COMPILED BY PRESENTING MATERIAL (TAKEN OUT OF CONTEXT) FROM THE RESEARCH STUDY OF THE RECORDS OF DOCTORS: DR. TAKADA MAKU, DR. HARASHITA TOSHIUKI, DR. HIROHUCHI MITCHIO AND DR. OTA NOBUOI OF TOHO UNIVERSITY HOSPITAL(Funabashi City CHIBA 214), JAPAN. THESE RESEARCH RECORDS WERE DEVELOPED OVER A 40 YEAR PERIOD OF TIME. (for more Information; www.sci.toho-u.ac.jp) BIBLIOGRAPHY, DR. SANG WHANG- "REVERSE AGING", MD., TED ROZEMA - "CHELATION THERAPY", AND DR. FRED SOYKA WITH ALAN EDMONDS- "THE ION EFFECT"

THE
RICHWAY
GROUP

A STATE OF THE ART

PROFESSIONAL AMETHYST BIOMAT 7000_{MX}

THE BIOMAT IS A MODERN CREATION AND PROVEN EFFECTIVE CRAFTED BY HIGHLY SKILLED SCIENTISTS AND ENGINEERS

A BREAKTHROUGH
IN MEDICAL SCIENCE



RICHWAY

Professional Amethyst Biomat
US FDA Medical Device 510K: K072534

RICHWAY INTERNATIONAL INC. & FUJI BIO SCIENCE INC.

1314 South King Street Suite 520 Honolulu HI 96814 USA. Tel: 808-589-2800 Fax: 808-597-1651
www.richwayusa.com www.richwaykorea.com www.richwayeu.com www.richwaynihon.co.jp

These statements have not been evaluated by the Food and Drug Administration. This product is not intended to diagnose, treat, cure or prevent any disease. This device does not cure cancer. It does not prescribe any diagnosis or treatment and only claims the statements in the medical device listing of the FDA's regulations. Specific medical advice should be obtained from a licensed health care practitioner. Any information and personal testimonies about this device does not reflect any medical claim.

Amethyst is universally accepted as a crystal with healing properties which has been around since ancient times. There are many ways in which amethyst can be incorporated into healing practices. Amethyst is identified as a crystal recognized for its ability in clearing certain types of blockages, most notably in Chakra alignment. By transforming energies on all levels, amethyst also has the ability to balance and stabilize energies located within certain areas. Amethyst has been associated with the healing and aligning of ailments. The benefit of using a crystal lies in the healer being able to detach him or herself from the healing process. The healer assigns the healing channel to the crystal, which frees the healer from involvement in the process. The healing process then becomes: universal energy to the amethyst to the recipient. Notice that the healer and the ego



are not part of the process. The healer is able to carry on with a healing session acting as the channel only. The ego has less opportunity to take the credit for itself because the healing channel has been assigned to the amethyst by the healer. Amethyst has come to be known as a power crystal with prolific healing powers that can be characterized as purifying, pacifying and transitional. Amethyst has the ability to transform lower energies into higher ones and acts as a healer at all levels of mind, body and spirit. The healing powers of amethyst date back as far as the ancient Greeks who believed that amethyst protected a person from the intoxicating effects of alcohol. The word amethyst is of Greek origin, and is translated as amethystus- meaning intoxicated (methysm nos from methein or intoxicated, methy= wine).

RICHWAY

Richway International Incorporation USA. Fuji Bio Sceinece Incorporation. Richway & NF Manufacture Richway International Japan Branche Co. The Life Corporation Korea. Richway EU Corporation.



MANAGING YOUR HEALTH CARE HEALING WITH AMETHYST

THIS BROCHURE HAS BEEN COMPILED BY PRESENTING MATERIAL (TAKEN OUT OF CONTEXT) FROM THE RESEARCH STUDY OF THE RECORDS OF DOCTORS: DR. TAKADA MAKU, DR. HARASHITA TOSHIUKI, DR. HIROHUCHI MITCHIO AND DR. OTA NOBUOI OF TOHO UNIVERSITY HOSPITAL(Funabashi City CHIBA 214), JAPAN. THESE RESEARCH RECORDS WERE DEVELOPED OVER A 40 YEAR PERIOD OF TIME. (for more Information: www.sci.toho-u.ac.jp) BIBLIOGRAPHY, DR. SANG WHANG- "REVERSE AGING", MD., TED ROZEMA - "CHELATION THERAPY", AND DR. FRED SOYKA WITH ALAN EDMONDS- "THE ION EFFECT"

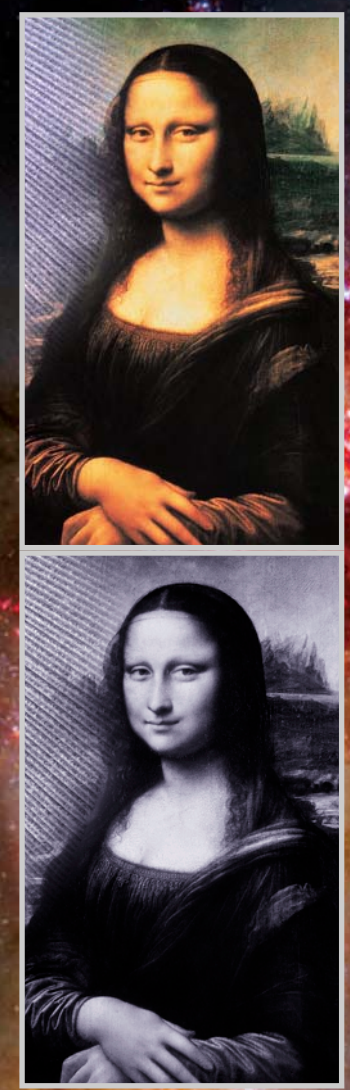
THE RICHWAY GROUP

A STATE OF THE ART

PROFESSIONAL AMETHYST BIOMAT 7000MX

THE BIOMAT IS A MODERN CREATION AND PROVEN EFFECTIVE CRAFTED BY HIGHLY SKILLED SCIENTISTS AND ENGINEERS

A BREAKTHROUGH
IN MEDICAL SCIENCE



RICHWAY

Professional Amethyst Biomat
US FDA Medical Device 510K: K072534

RICHWAY INTERNATIONAL INC. & FUJI BIO SCIENCE INC.

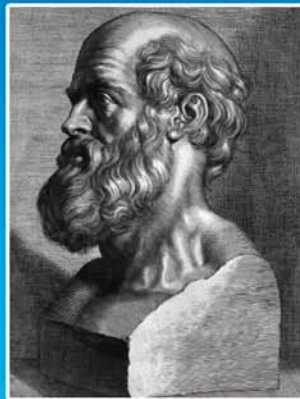
1314 South King Street Suite 520 Honolulu HI 96814 USA. Tel: 808-589-2800 Fax: 808-597-1651
www.richwayusa.com www.richwaykorea.com www.richwayeu.com www.richwaynihon.co.jp

RICHWAY

LIFE WITH A BIOMAT

History of Heat Therapy

The history of raising body temperature for therapeutic purposes can be traced back twenty four hundred years ago.



"Give me the power to produce fever,
and I will cure all disease."

Hippocrates (BC 460)



RICHWAY

SPREADING THE MESSAGE AROUND THE WORLD

GREETINGS FROM RICHWAY IN HAWAII

Aloha! Thank you for your recent purchase and interest in RichWay International Inc.

We hope that you will find our products of exceptional quality, and receive many health benefits from their use. RichWay International, Inc. is always seeking to enhance and innovate ways that allow you to live and look both healthy and happy. We imbue all of our products with cutting edge high technology, engineering and methodology to meet your expectations of quality, performance, and professional design. The TMBIOMAT_{MX} is used by thousands of customers all over the world. It has helped to make satisfied users healthier, and we feel confident that it will help you with your health concerns as well. Our newest addition, the BIOMAT_{MX} Professional, is specifically designed for massage tables. It is made of amethyst semi-precious stones, and is constructed for ease of mobility. Again, thank you for your purchase. We appreciate your patronage and wish you a long life, health and many "rich" rewards.

Mahalo! Many Warm Regards

RICHWAY INTERNATIONAL INC. CUSTOMER SERVICE





RICHWAY **The name you can trust!**

**We believe that people must be healed
from their wounds, renewed in spirit,
recovered from illness, enlightened from ignorance,
and saved from pain.**

No one should be left behind.

**Our beauty does not lie in our appearance,
but in the passion of our showing and giving care.**

Richway, the name you can trust...

DEAR RICHWAY™ FAMILY

We believe in the power of teamwork.
We believe that with hard work and passion, anything is possible.
We strive for excellence and integrity in everything we do.
We recognize the relationship between our lifestyle and our health,
and the importance of maintaining wellness.

You want to better yourself.
You have a burning desire to succeed.
You demonstrate all the most important factors
for success: commitment, a passion to make a
difference, a vision for achieving positive change,
and the courage to take action.

We know our purpose is to make life better and
we understand our basic belief of
look better, feel better and live better.
Our products reflect the scientific
advancements of today.
We work to achieve freedom of time and finances.
We serve our communities,
we respect the environment,
and we place our families first.
We strive to be loving, caring human beings,
and we teach what we've learned to
anyone who is open to it.
We believe in Richway,
we believe in what we offer,
and we believe in our purpose.

Warmest regards,

Jeanna Kim
President & CEO
RICHWAY™ INTERNATIONAL INC.



21ST ADDITION

THE
RICHWAY
GROUP

RICHWAY INTERNATIONAL INCORPORATION. 1314 SOUTH KING STREET SUITE 520 HONOLULU HI 96814 USA. TEL: 808-589-2800 FAX: 808-597-1651 WWW.RICHWAYUSA.COM
THE LIFE CORPORATION (RICHWAY INTERNATIONAL KOREA BRANCH) HANSOL BLDG 3F, 1621-3, SEOCHO-DONG, SEOCHO-GU, SEOUL, KOREA TEL: 82-2-2183-0355 WWW.RICHWAYKOREA.COM
RICHWAY INTERNATIONAL CORPORATION JAPAN BRANCH. 福岡県大野城市仲畑2丁目6-41 TEL: 092-404-3185 WWW.RICHWAYNIHON.CO.JP
RICHWAY PACIFIC PHILIPPINE CORPORATION. RICHWAY CHINA CORPORATION. RICHWAY MEXICO. CANADA, ENGLAND, AUSTRALIA, NORWAY, FRANCE, GERMANY, SWEDEN,
RUSSIA, UKRAINE, CZECH, BRAZIL, COLOMBIA, INDONESIA, HONGKONG, TAIWAN.

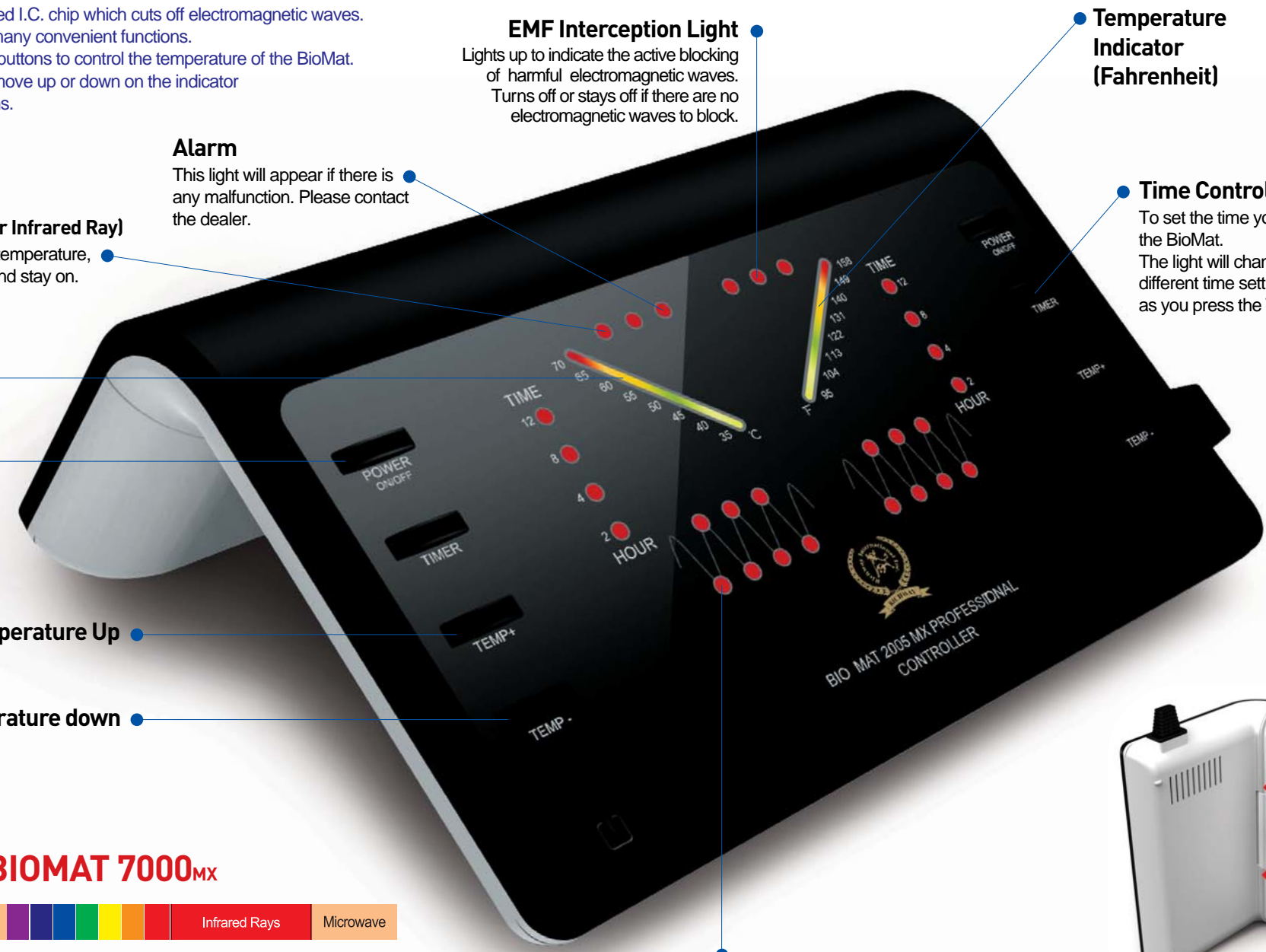
SAFETY SYSTEM

biomat 7000_{mx}

CONTROLLER FEATURES

SOFT TOUCH POWER ON/OFF AND TEMPERATURE UP AND DOWN

It has the most advanced I.C. chip which cuts off electromagnetic waves. A control system with many convenient functions. Temperature up/down buttons to control the temperature of the BioMat. You will see the lights move up or down on the indicator as you press the buttons.



Alarm
This light will appear if there is any malfunction. Please contact the dealer.

F.I.R Indicator (Far Infrared Ray)
When you change the temperature, this light will come on and stay on.

Temperature Indicator (Celsius)

Soft Touch Power Switch

Temperature Up

Temperature down

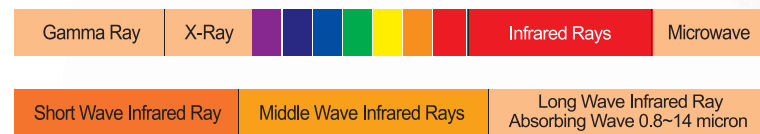
EMF Interception Light
Lights up to indicate the active blocking of harmful electromagnetic waves. Turns off or stays off if there are no electromagnetic waves to block.

Temperature Indicator (Fahrenheit)

Time Control
To set the time you want to use the BioMat. The light will change to a different time setting as you press the Timer Button.

E.D.N.I Indicator (Negative Ion)

RICHWAY BIOMAT 7000_{MX}



Unlike an electric blanket, the mat does not get hot when it is turned on. However, if you lie down on it, it warms the inside of your body and the part of the pad making contact with your skin gets warm. When any part of the pad gets higher than the selected temperature, the sheet current is cut off by thermal sensors distributed throughout the pad. When the Biomat reaches higher than the selected temperature, then the Negative Ions come on and will stay on until the Biomat needs to raise the temperature. It comes with an external control box which allows you to adjust the desired temperature and running time (between 2, 4, 8 or 12 hours). As an added safety feature, when the controller is set to 122°F or higher, it will automatically step down to 113°F after 4 hours.

Far Infrared Rays penetrate 6 inches into the body. Therefore, these rays not only benefit the muscles on the surface of the body, but all cells including blood vessels, lymph glands, and nerves in the deepest parts of our body.



- U.S. FDA Medical Device 510K Number :** K072534
- JAPAN FDA Medical Device Number :** BG1030097
- KOREA FDA Medical Device Number :** A83080.01 (2)



The Nobel Prize in Physiology or Medicine 1991

FOR THEIR DISCOVERIES CONCERNING THE FUNCTION OF SINGLE ION CHANNELS IN CELLS



Max-Planck-Institut für Biophysikalische Chemie Göttingen, Germany, 1944-
Erwin Neher, Germany



Max-Planck-Institut für Medizinische Forschung Heidelberg, Germany, 1942-
Bert Sakmann, Germany

Press Release : The 1991 Nobel Prize in Physiology or Medicine
NOBELFORSAMLINGEN KAROLINSKA INSTITUTET
THE NOBEL ASSEMBLY AT THE KAROLINSKA INSTITUTE



SUBSTANTIATED BY THE NOBEL MEDICAL COMMITTEE

PRESS RELEASE : The 1991 Nobel Prize in Physiology or Medicine. NOBELFORSAMLINGEN KAROLINSKA INSTITUTET THE NOBEL ASSEMBLY AT THE KAROLINSKA INSTITUTE. The Nobel Assembly at the Karolinska Institute has today decided to award the Nobel Prize in Physiology or Medicine 1991 jointly to Dr. Erwin Neher and Dr. Bert Sakmann for their discoveries concerning the function of single ion channels in cells (MORE INFORMATION : <http://nobel.sdsc.edu/medicine/laureates/1991/press.html>)

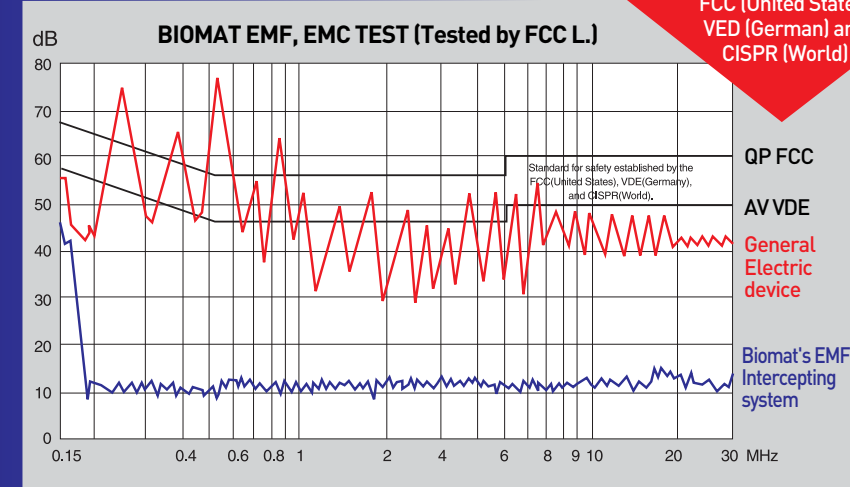
What is EMF?

EMF (Electromagnetic Fields) is a term used to describe the invisible electric and magnetic fields radiating away from man-made alternating electrical current. EMF radiates from all electrical appliances in the home, office or factory, in cars, trucks, buses and overhead tram and train lines.

What does the Biomat EMF interceptor do?

The Biomat EMF Interceptor acts in the same way as a lightning rod, safely conducting the EMF energy away to ground. With this feature, you can effectively block exposure to EMF for yourself and your family.

Biomat EMF Blocking Levels drop far below standards for safety established by the FCC (United States) VED (German) and CISPR (World)



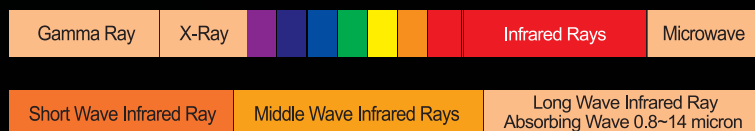
SAFETY SYSTEM

biomat 7000_{mx}

CONTROLLER FEATURES

SOFT TOUCH POWER ON/OFF AND TEMPERATURE UP AND DOWN

It has the most advanced I.C. chip which cuts off electromagnetic waves. A control system with many convenient functions. Temperature up/down buttons to control the temperature of the BioMat. You will see the lights move up or down on the indicator as you press the buttons.



RICHWAY BIOMAT 7000_{MX}

Unlike an electric blanket, the mat does not get hot when it is turned on. However, if you lie down on it, it warms the inside of your body and the part of the pad making contact with your skin gets warm. When any part of the pad gets higher than the selected temperature, the sheet current is cut off by thermal sensors distributed throughout the pad. When the Biomat reaches higher than the selected temperature, then the Negative Ions come on and will stay on until the Biomat needs to raise the temperature. It comes with an external control box which allows you to adjust the desired temperature and running time (between 2, 4, 8 or 12 hours). As an added safety feature, when the controller is set to 122°F or higher, it will automatically step down to 113°F after 4 hours. Far Infrared Rays penetrate 6 inches into the body. Therefore, these rays not only benefit the muscles on the surface of the body, but all cells including blood vessels, lymph glands, and nerves in the deepest parts of our body.

1 Soft Touch Power Switch

2 Time Control

To set the time you want to use the BioMat. The light will change to a different time setting as you press the Timer Button.

3 Temperature down

4 Temperature Up

5 F.I.R Indicator (Far Infrared Ray)

When you change the temperature, this light will come on and stay on.

6 EMF Interception Light

Lights up to indicate the active blocking of harmful electromagnetic waves. Turns off or stays off if there are no electromagnetic waves to block.

7 Alarm

This light will appear if there is any malfunction. Please contact the dealer.

8 Temperature Indicator(Celsius)

9 Temperature Indicator (Fahrenheit)

10 E.D.N.I Indicator (Negative Ion)



U.S. FDA Medical Device 510K Number : K072534

JAPAN FDA Medical Device Number : BG1030097

KOREA FDA Medical Device Number : A83080.01 [2]



The Nobel Prize in Physiology or Medicine 1991

FOR THEIR DISCOVERIES CONCERNING THE FUNCTION OF SINGLE ION CHANNELS IN CELLS



Max-Planck-Institut für Biophysikalische Chemie Göttingen, Germany, 1944-
Erwin Neher, Germany



Max-Planck-Institut für Medizinische Forschung Heidelberg, Germany, 1942-
Bert Sakmann, Germany

Press Release : The 1991 Nobel Prize in Physiology or Medicine
NOBELFORSAMLINGEN KAROLINSKA INSTITUTET
THE NOBEL ASSEMBLY AT THE KAROLINSKA INSTITUTE



SUBSTANTIATED BY THE NOBEL MEDICAL COMMITTEE

PRESS RELEASE : The 1991 Nobel Prize in Physiology or Medicine. NOBELFORSAMLINGEN KAROLINSKA INSTITUTET THE NOBEL ASSEMBLY AT THE KAROLINSKA INSTITUTE.

The Nobel Assembly at the Karolinska Institute has today decided to award the Nobel Prize in Physiology or Medicine 1991 jointly to Dr. Erwin Neher and Dr. Bert Sakmann for their discoveries concerning the function of single ion channels in cells (MORE INFORMATION : <http://nobel.sdsc.edu/medicine/laureates/1991/press.html>)

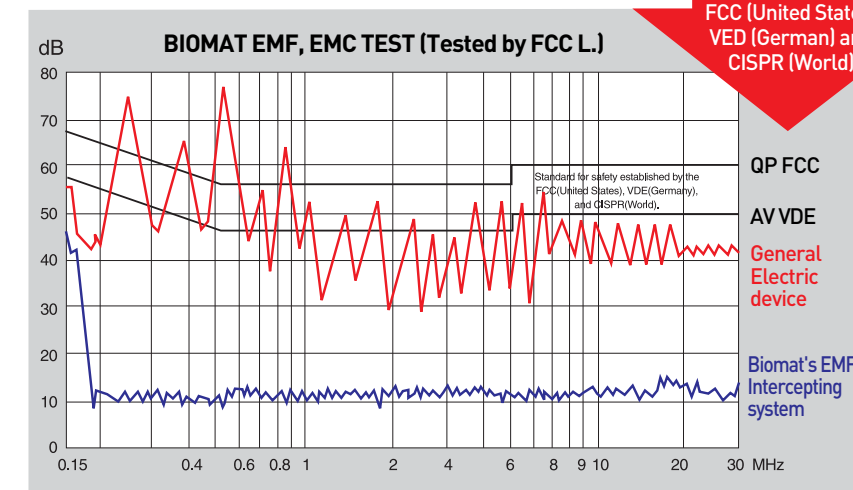
What is EMF?

EMF (Electromagnetic Fields) is a term used to describe the invisible electric and magnetic fields radiating away from man-made alternating electrical current. EMF radiates from all electrical appliances in the home, office or factory, in cars, trucks, buses and overhead tram and train lines.

What does the Biomat EMF interceptor do?

The Biomat EMF Interceptor acts in the same way as a lightning rod, safely conducting the EMF energy away to ground. With this feature, you can effectively block exposure to EMF for yourself and your family.

Biomat EMF Blocking Levels drop far below standards for safety established by the FCC (United States) VED (German) and CISPR (World)



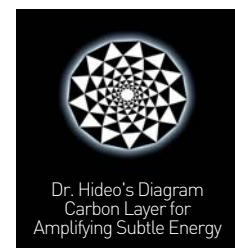
FAR INFRARED RAY EMITTING MEDICAL DEVICE
WITH AMETHYST HEALING PROPERTIES

RICHWAY BIOMAT 7000_{MX}



RICHWAY BIOMAT™ **PROFESSIONAL**

Best product for professional treatment, massage, chiropractic and heat therapy. Uses Super fiber (Patent 13865601) materials to generate far infrared rays. (6.5~12 Microns) that the human body can easily absorb.



RICHWAY BIOMAT™ **AMETHYST QUEEN**

Good for home use on Queen sized bed. Designed for 2 person use. Separated temperature controls for the left or right side. Far infrared rays emit directly into our body, penetrating several inches in. You can feel the warmth which can cause you to perspire profusely, however our skin won't be hurt by the far infrared ray heat.

FAR INFRARED RAYS CAN PENETRATE **DEEPLY**

Because of this, it can warm our body from the inside out, and stimulate our system. Infrared rays are healthy rays at the opposite side of the spectrum that provide warmth and relaxation.

Professionals in the medical and therapeutic field have found that the same infrared rays found in natural sunlight are generated in the RichWay BIOMAT Sleeping System through modern technology.

You'll feel those tired muscles relax as beneficial dry heat not only warms the surface of your skin, but also penetrates into it for deep, soothing comfort. Far Infrared Ray's deep heat raises your body temperature, inducing an artificial fever.

As it works to combat the fever, your body's immune system is strengthened. Combined with the elimination of toxins and waste produced by the intense sweating, your overall health and resistance to disease is increased.

The gentle warmth of your Amethyst™BIOMAT_{MX} gives you an overall massaging effect, soothing jangled nerves and knotted muscles. You'll feel rejuvenated and renewed, restored in both body and mind.

NASA Discovered How to Generate Infrared Rays


Infrared Ray generating materials are mixed with fabrics, paper, plastics and ceramics. As mentioned before, all surfaces radiate FIR waves as a function of surface temperature.

However, this special compound of alumina (Al₂CO₃) and silica (SiO₂) can convert any normal energy into Infrared Ray waves in a most efficient manner. At room temperature, the materials containing these compounds will generate more Infrared Ray waves than ordinary materials.

The discovery of these mineral oxides, and their capability to generate Infrared Ray waves was made by NASA.

 U.S. FDA Medical Device 510K Number: K072534

 JAPAN FDA Medical Device Number: BG1030097

 KOREA FDA Medical Device Number: A83080.01 (2)

AMETHYST PROFESSIONAL BIOMAT™

™BIOMAT SPECIFICATIONS

1. The RichWay™BIOMAT uses Ceramic Fiber (Patent1386560).
2. The RichWay™BIOMAT has a special function that emits Negative Ions and transforms Positive Ions to Negative Ions in the human body. It provides strength and energy to the human body.
3. The Super Fiber materials generate far infrared rays (6-12 microns) that the human body can easily absorb.
4. A special layer of double fiberglass and carbon completely cuts off harmful Electromagnetic waves.
5. The™BIOMAT has advanced software and a soft-touch control system, which has many convenient functions.
6. The™BIOMAT emits many Negative Ions and Far Infrared Rays which contributes to a healthy life.



RichWay™
Amethyst BIOMAT Professional



BMP Size 700x1880mm / 27.56"x74"
Net Weight 13kg / 28lbs without controller
Electric Consumption 160W
Voltage AC120
Performance Temperature 35-70°C / 95-158°F
Amethyst Size 5mm-12mm
Amethyst Color Natural Violet Clear
Cut & Shape Tumbled
Polariscope Test Dr
Refractive Index 1.544-1.553

Fluorescence LW : No Refraction, Natural factor

RichWay™
Amethyst BIOMAT Single



Amethyst Single Size 1000x2002mm / 39.37"x77.81"
Net Weight 15kg / 34lbs without controller
Electric Consumption 180W
Voltage AC120
Performance Temperature 35-70°C / 95-158°F
Amethyst Size 5mm-12mm
Amethyst Color Natural Violet Clear
Cut & Shape Tumbled
Polariscope Test Dr
Refractive Index 1.544-1.553

Fluorescence LW : No Refraction, Natural factor

RichWay™ Amethyst
BIOMAT Queen Size & King



Amethyst Queen Size 1400x2002mm / 55.11"x77.81"
Amethyst King Size 1800x2002mm / 72.65"x77.81"
Net Weight 23kg / 52lbs(Queen) - 32kg / 72lbs(King)
Electric Consumption 330W
Voltage AC120
Performance Temperature 35-70°C / 95-158°F
Amethyst Size 5mm-12mm
Amethyst Color Natural Violet Clear
Cut & Shape Tumbled
Polariscope Test Dr
Refractive Index 1.544-1.553

Fluorescence LW : No Refraction, Natural factor

RichWay™
Amethyst Mini-Mat



Amethyst mini-mat Size 850x330mm / 33"x17"
Net Weight 3.8kg / 8.2lb
Electric Consumption : 100W
Voltage AC100
Amethyst : 1.2kg / 2.65lb
Tourmaline 1.0kg / 2.2lb
Natural Infrared Rays and Negative Ions.

Richway Amethyst Pillow
Elastic Polyurethane memory foam pillow.

Pillow Size 480x300x120mm
19"x12"x4.3"
Net Weight 3.63kg / 8lb
Amethyst Weight 0.7kg
Tourmaline Weight 0.4kg



POKA POKA
Infrared
Jewelry Belt

GENERAL SIZE 1450x140mm / 54"x6.5"
XXL SIZE 1650x140mm / 76"x6.5"
Infrared Ray Heating Part 440x220mm / 18" x 8"
Power AC120V (50/60Hz)
Power consumption 50W
Max. temperature 60°C / 140°F

Infrared Rays from 8 Precious Stones. Mini Biomat Model II
Amethyst, Green Jade, Black Tourmaline, Topaz, Crystal, Tiger eye, Citrine, Elvan and Over 8 different kinds Gemstone.
[Over 8 kinds of jewels such as green jade, amethyst and black tourmaline are fully included throughout the entire textured area.]



DETOXI
300Hrs
Salt

1 Pack 2,000 milligrams
1 Box 30 Packs
1 Carton 3 Boxes
Package Polypropylene film
Shelf Life 3 years from date of manufacture marked on box
Supplement Facts Salt (NaCl)
Production Burnt 300 Hours at 2,000°F
 Superior quality lite salt

Recommendation for use : For maximum results take 1 pack before thermotherapy treatment or 30 minutes before meal up to 3 times per day with at least 8 oz of water.



Richway
Alkal-Life 7000sL
Next Generation
Alkaline Ionizer

High Quality pH Calibration System. Touchscreen performance system. Electrolysis performance system.

Alkaline Ionized Water is a powerful antioxidant.
 ORP(Oxidation Reduction Potential) → in the negative range → Antioxidant
 → Supplying abundant activated Hydrogen → Rejuvenating our body.

Richway Alkal Energy-A1
Tourmaline Energy Water Flask

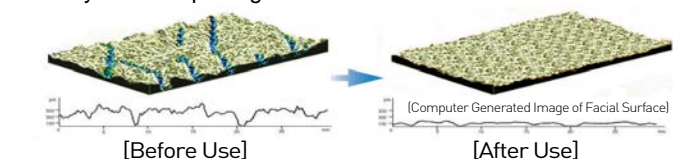
Size 7.5" x 2.7" / 20cm x 7 cm
Weight 680 grams / 1.5 lb
Material Tourmaline pellets for Negative Ions, maifanitem, Calcium Ion pellets, Zeolites and Magnesium.



RichWay™
Rejuvena

Rejuvena sL
Combined Ultrasonic
Massage

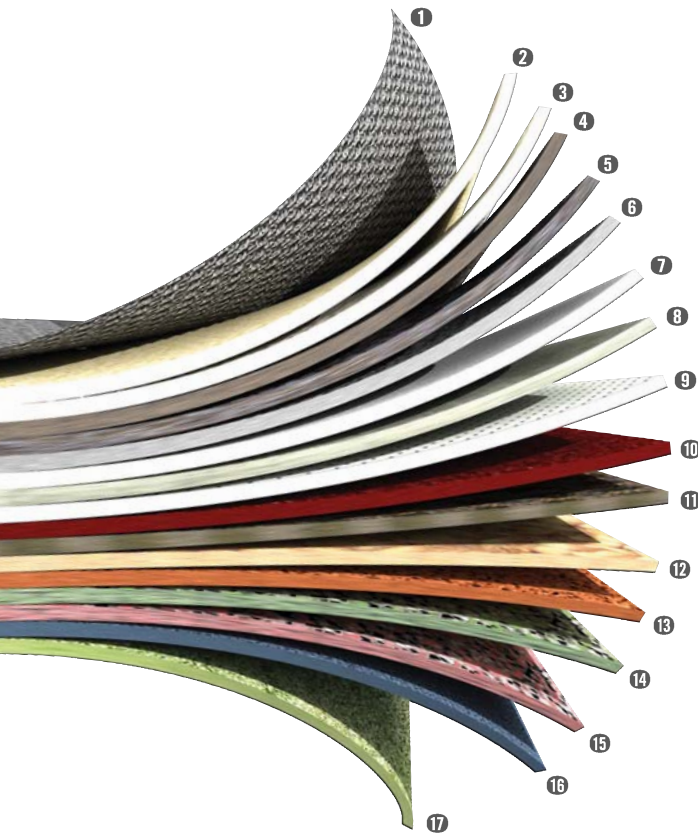
Experience the effectiveness of the combined Ultrasonic and Negative Ion System in improving Skin Texture.



The Rejuvena sL combines Ultrasonic Massage & Negative Ions to enhance the effectiveness of this advanced technology. Beautiful skin has a supple, soft, silky texture. Over time, the skin becomes dry, rough, and less resilient. Rejuvena sL's Ultrasonic System helps encourage the body's natural beauty rhythms to restore a younger-looking appearance while bringing vitality and smoothness to the skin.

CONSISTS OF 17 LAYERS.

UNIQUE INNOVATION IN BIO TECHNOLOGY:



Produces High Quality Infrared Rays By Means of Super Fiber and Natural Amethyst.

- 1 **Surface material:** Silicon urethane with cotton
- 2 **Amethyst (with Tourmaline) :**
Transfers to natural far infrared rays
- 3 Top waterproof layer
- 4 Hyron cotton layer for thermal insulation
- 5 Second waterproof layer
- 6 Negative ion generator
- 7 Super fiber layer for far infrared rays
- 8 First fiber glass layer
(For interception of harmful EMF waves)
- 9 Carbon layer for amplifying far infrared rays
- 10 First urethane layer for protection and reflection
- 11 Solid square cotton padding layer
- 12 Second fiber glass layer
(Prevents overheating and harmful EMF waves)
- 13 EMF protected heating plate with thermostats and bi-metals
- 14 Second urethane layer for protection and reflection
- 15 Concentrated ceramic layer for reflection of far infrared rays
- 16 Hyron silk cotton padding layer for thermal insulation
- 17 **Bottom material:** High quality cotton with brass pattern

✓ PRODUCE HSP [Heat Shock Protein]

Heat Shock Protein is known to protect cells from thermal stress. In order for our body to prevent HSP secretions and to allow recovery, our brain actively secretes hormones called Endorphins, which are neurotransmitters responsible for happy emotions and relief from pain.

43.0	Protein activation H.S.P	When the body temperature is decreased by 1 degree
41.0	Bacteria and viruses are susceptible to heat	
40.0		
37.0	3,000 Essential enzymes are activating	36% of immune functions decline!
36.5		12% of basic metabolism declines!
35.5	Difficulty in autonomic nervous system	50% of enzymatic activities decline!
35.0	Immunity greatly decreased	



A lot of people give up during the first 60 minutes because it is difficult to withstand the heat. However, people get used to it after a while. It is known that a greater number of treatments are more beneficial to the body.

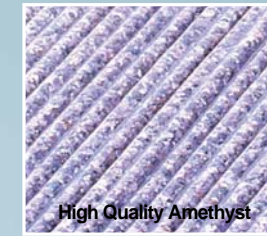
	Age	Gender	Before	During treatment	After
1	46	Male	36.5 °C	37.6 °C	38.6 °C
2	64	Male	36.5 °C	37.4 °C	37.9 °C
3	54	Female	36.5 °C	37.4~38 °C	38 °C
4	52	Male	36.5 °C	37~37.6 °C	37.8~38.5 °C
5	58	Female	36.4 °C	37.4 °C	38~38.3 °C
6	70	Female	36.5 °C	37 °C	37.8~38.2 °C
7	76	Female	36.9 °C	37.6 °C	38~38.6 °C
8	59	Male	36.5 °C	37.8 °C	37.9~38.2 °C
9	52	Female	36.5 °C	37.3 °C	37.9~38.4 °C
10	31	Female	36.4 °C	37.3 °C	38.1~39.1 °C

Without enzyme activity, there is no life. The aging process tends to damage our blood vessels, which worsens the circulation and makes us feel colder. Decreasing physical exercise naturally lessens the production of heat and the control center of the brain that responds to the changes in temperature.

MANAGING YOUR HEALTH CARE

RICHWAY IS COMMITTED TO THE ENHANCEMENT AND DEVELOPMENT OF THE HUMAN POTENTIAL

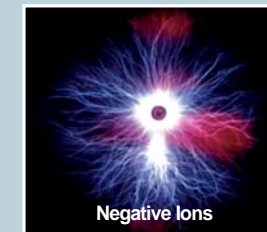
HIGH QUALITY AMETHYST



The world's best source of Amethyst is in Korea. Amethyst crystals are most famous for its power to detoxify the body from alcohol and other harmful elements.

Amethyst also produces Far Infrared Rays. These Far Infrared Rays (FIR) revitalize biological functions of cells to help promote blood circulation and perspiration, provide relief from neuralgia, backaches and arthritis, and eliminate toxins. Far Infrared Rays provide relaxation, antibacterial functions and purification of the air.

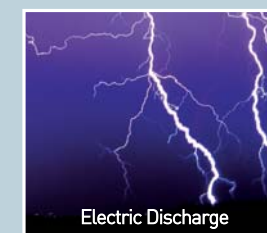
A LIFE GIVING ENERGY : NEGATIVE IONS



Revolutionary Discoveries! How Negative Ion Therapy can help people: If 600 to 1000 volts of negative potential is applied to an insulated body, more calcium and sodium minerals in the circulating blood get ionized, thus changing an acidified

body to an alkaline body. Although it uses a high voltage, since there are no current flows present, there are no risks or dangers. This invention is sometimes called a static electric treatment device or high potential treatment device. Its effects stretch out to and are effective for stiff shoulders, headaches, insomnia, and chronic constipation. It works for allergy patients; however, it is advised to consult a physician before using the product.

THE FUNCTION OF NEGATIVE IONS



Purifying blood, reviving cells, improving the immune system, controlling the autonomic nervous system, the vitalization of cell metabolism, relief from pain and symptoms of paralysis.

RICHWAY LIFE WITH A BIOMAT



HEALING WITH A BEAM OF LIGHT

DEEP IMPACT POWER



Increases Blood Circulation and Strengthens the Cardiovascular System: As your body increases sweat production to cool itself, your heart works harder pumping blood at a greater rate to boost circulation.

Improved Skin: The profuse sweating achieved after just a few minutes on the TMBIOMAT_{MX} carries off deeply imbedded impurities and dead skin cells, leaving the skin glowing and immaculately clean. Increased circulation draws your skin's own natural nutrients to the surface.

Burns Calories and Controls Weight: As you relax in the gentle heat of the TMBIOMAT_{MX}, your body is actually hard at work, producing sweat, pumping blood and burning calories. According to a Journal of the American Medical Association report, in a single Infrared Ray sauna session, you may burn as many calories as you would rowing or jogging for 30 minutes. So you lose weight-not just water.

Improves the Immune System: Far Infrared Ray's deep heat raises your body temperature, inducing an artificial fever. As it works to combat the fever, your body's immune system is strengthened. Combined with the elimination of

toxins and waste produced by the intense sweating, your overall health and resistance to disease is increased.

Reduces Stress and Fatigue: The gentle warmth of your Amethyst TMBIOMAT_{MX} gives you an overall massaging effect, soothing jangled nerves and knotted muscles. You'll feel rejuvenated and renewed, restored in both body and mind.

Removes Toxins: Increased blood circulation stimulates the sweat glands, releasing built-up toxins and waste. Daily sweating can help detoxify your body as it rids itself of an accumulation of potentially carcinogenic heavy metals, as well as alcohol, nicotine, sodium, sulfuric acid and cholesterol.

Relieves pain: The deep heat of your Amethyst TMBIOMAT_{MX} helps peripheral blood vessels dilate, bringing relief and healing to muscles and soft tissue injuries. Increased blood circulation carries off metabolic waste products and delivers oxygen-rich blood to oxygen-depleted muscles, so they recover faster.

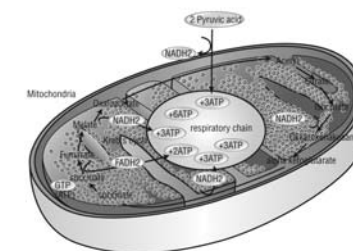
HOW TO FEEL BETTER AND RECONDITION

Feel rejuvenated and renewed, restored in both body and mind

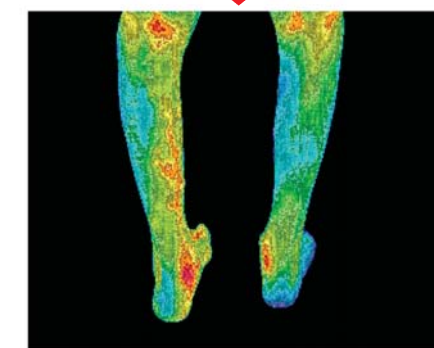
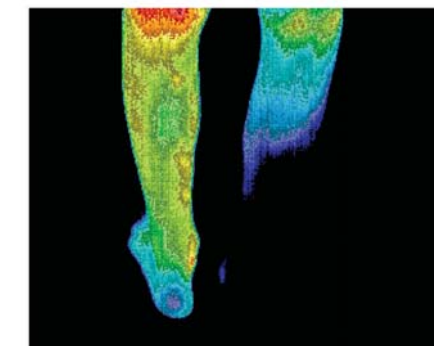
Body temperature and metabolic activity

Mitochondria is produced through body heat, and Heat Shock Protein by Infrared Ray's heat and vibration.

The Far Infrared Ray is both an electromagnetic wave and an energy wave. Long frequency waves are considered to be beneficial to our body. They replicate mitochondrial activities.



Production of ATP in mitochondria



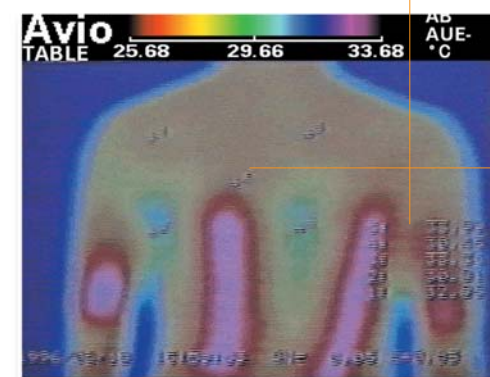
Images show poor circulation before and after 14 days of Biomat usage. Note the increase in circulation.

When the body is warm, metabolism rises, increasing blood circulation. The circulation of the blood can be likened to the work of a fleet of trucks, some that bring in fresh food and others that take away the garbage. The heat from internal organs provides the energy, the heart provides the delivery.

Comparison of Normal Heat and Biomat Infrared Rays

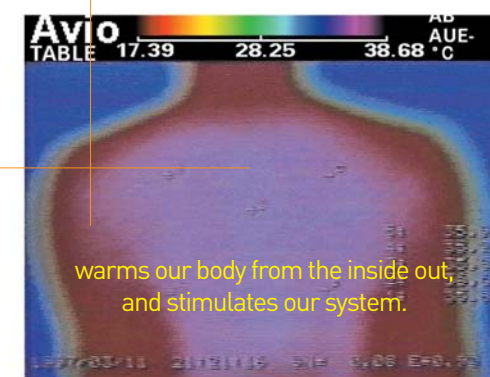
After using a normal heating pad for 10 minutes

Only the outer surface of the skin is affected in this area



After 5 minutes using Far Infrared Rays

Skin is penetrated 80 times more deeply than with other kinds of heat



warms our body from the inside out, and stimulates our system.

There are two kinds of heating applications here. One is the simple application of any warming technique imaginable, while the other is Far Infrared Rays that cause the molecules inside the mitochondria of the cell to resonate and be activated. One of the main focuses of attention during the 21st century will be on these methods of heating the body by the Far Infrared Ray.